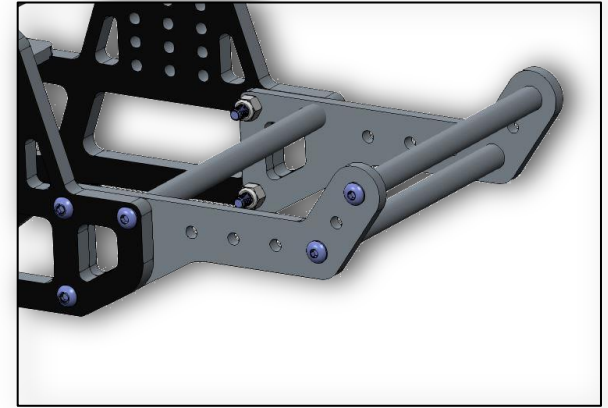


Wheelie Bar Instructions

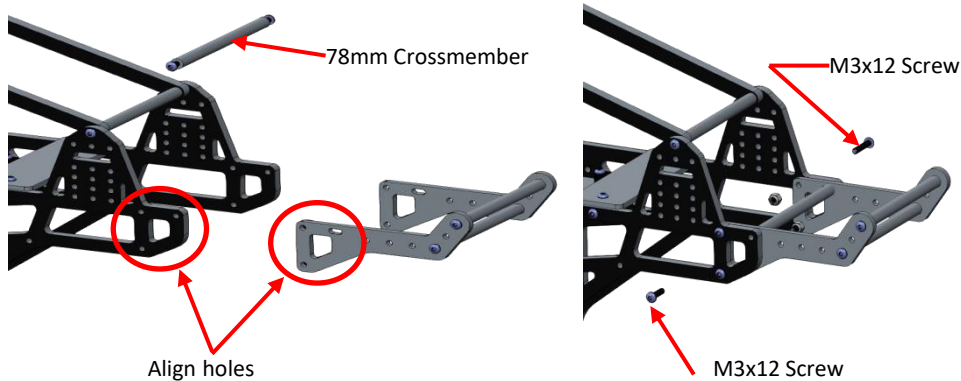
Step 1:

- Loosely attach two 78mm crossmembers to one wheelie bar plate using M3 screws.
- Attach the second wheelie bar plate using M3 screws



Step 2:

- Slide wheelie bar assembly into the inside of the chassis and align the holes shown below.
- Insert 78mm crossmember in place of existing 78mm crossmember.



Step 3:

- Install two M3 screws into the 78mm crossmember.
- Install four M3 screws and locknuts into the remaining holes.
- Tighten all fasteners snug to complete installation,.

