

1/24 MT KIT

1/24 MT KIT

CHASSIS PARTS LIST	QTY
Chassis Plate	2
Roll Bar	1
35mm Crossmember	5
Cage – Top	1
Cage – Left	1
Cage – Right	1
Dual Shock Brackets	4
M2.5 x 10 Rounded Head Screw - Black	18
M1.4 x 10 Screw	4
M1.4 Nut	16



Parts Required

1/24 MT KIT

- SCX24 ESC Tray
- SCX24 Battery Tray
- SCX24 Transmission Tray
- SCX24 Long Wheelbase (LWB) 4-Links
- SCX24 Body Mounts
- SCX24 Axles
- SCX24 Transmission
- 1/25 AMT Monster Truck Tires

Donor Parts	SCX24 JEEP/C10	SCX24 DEADBOLT	AXIAL CHASSIS – AXI31614
ESC Tray	✓	✓	✓
Battery Tray	✓	✓	✓
Transmission Tray	✓	✓	✓
Long Wheelbase (LWB) 4-links	✓	-	-
Front Body Mounts	✓	✓	✓
Rear Body Mount	-	✓	-
Axles	✓	✓	-
Transmission	✓	✓	-

Note 1: Aftermarket, non-Axial components may not fit. Proceed with caution.

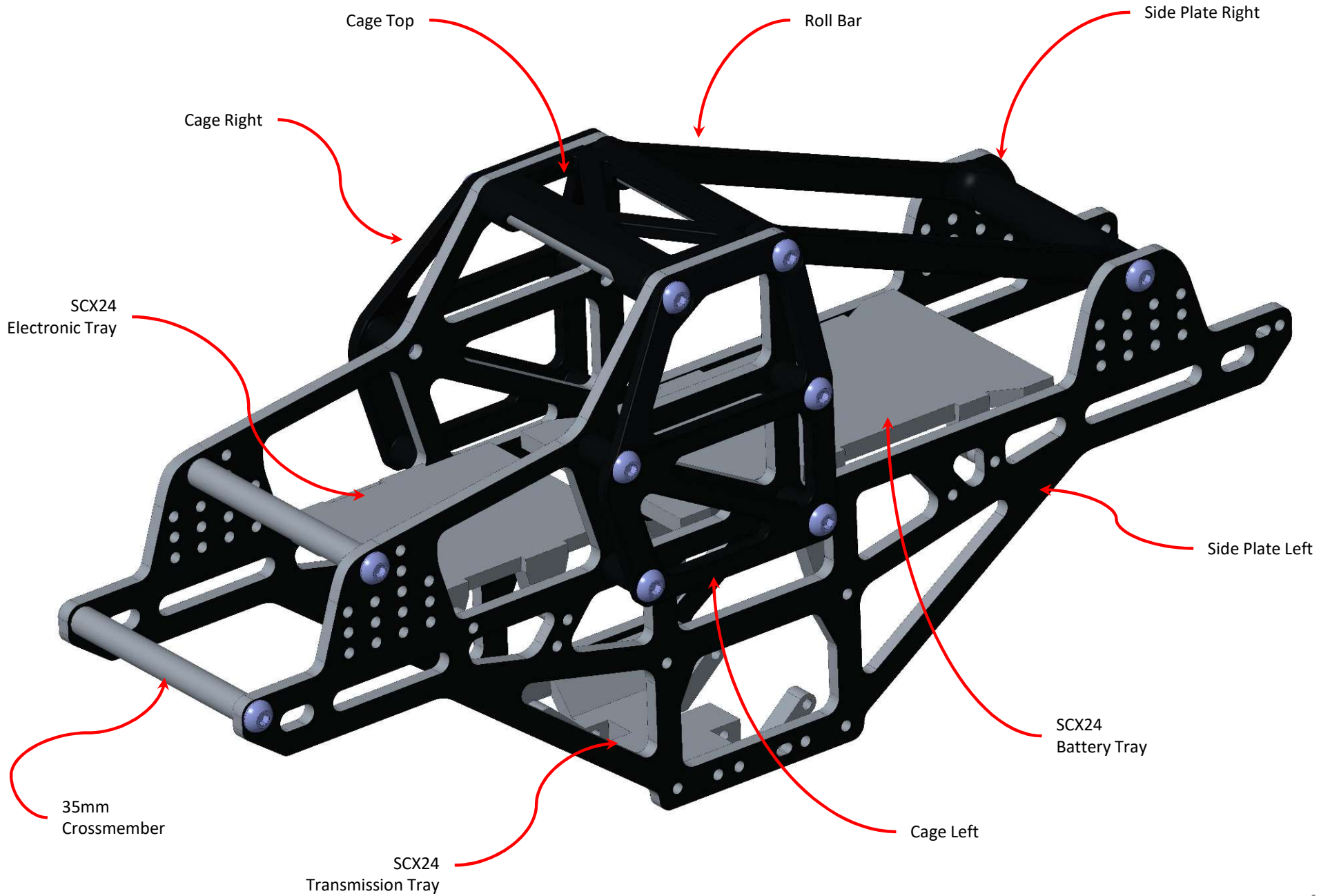
Note 2: All required donor parts can be purchased separately.

Note 3: Battery trays are the same for all options.

Note 4: Jeep/C10 ESC trays are the same and are lower CG.

Note 5: Deadbolt/AXI31614 ESC trays are the same and are higher CG.

1/24 MT KIT



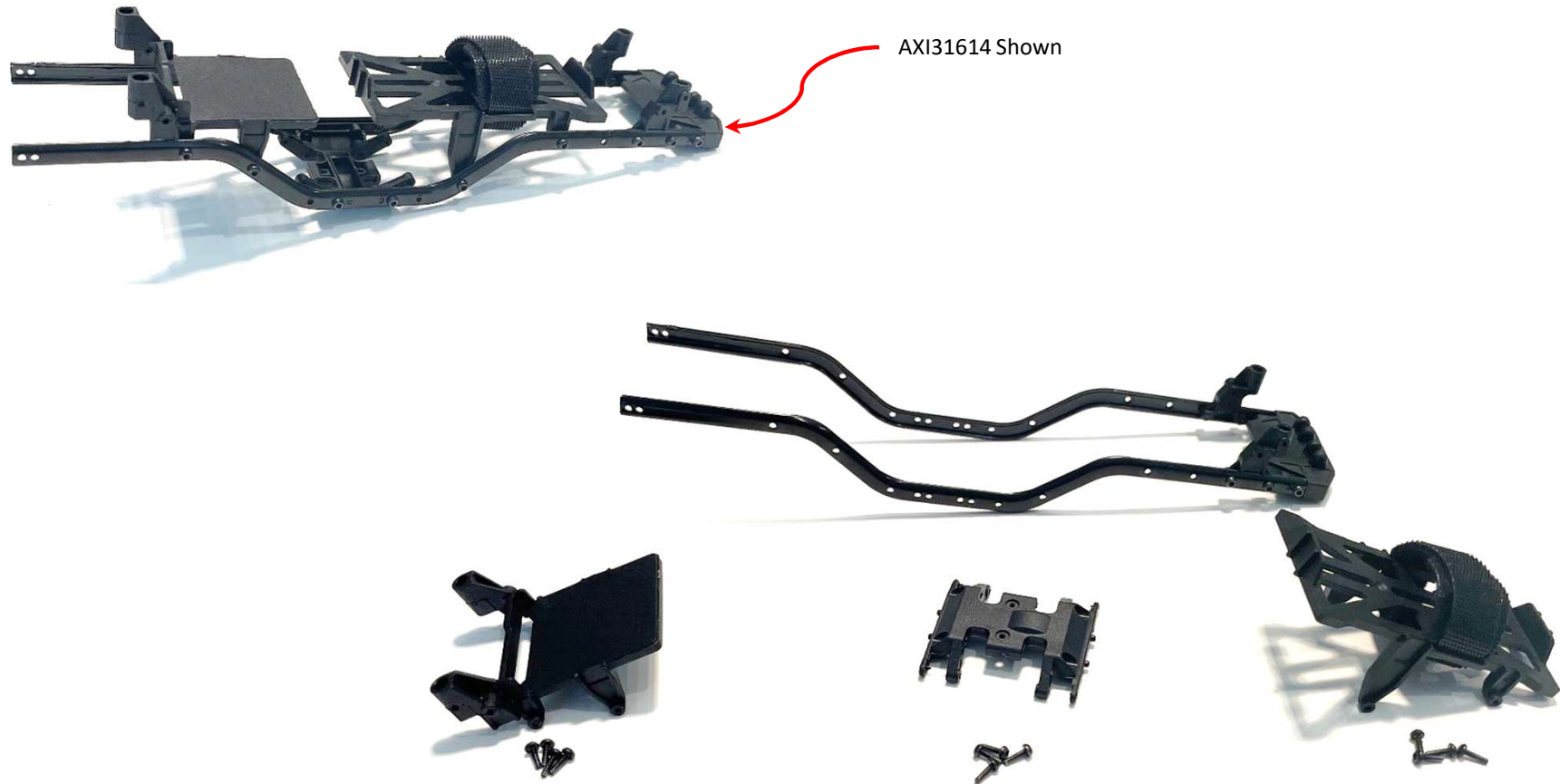
Step 1: Crossmember Installation – Roll Bar and Cage Top

- Insert one 35mm crossmember into the roll bar.
- Insert two 35mm crossmembers into the cage top.



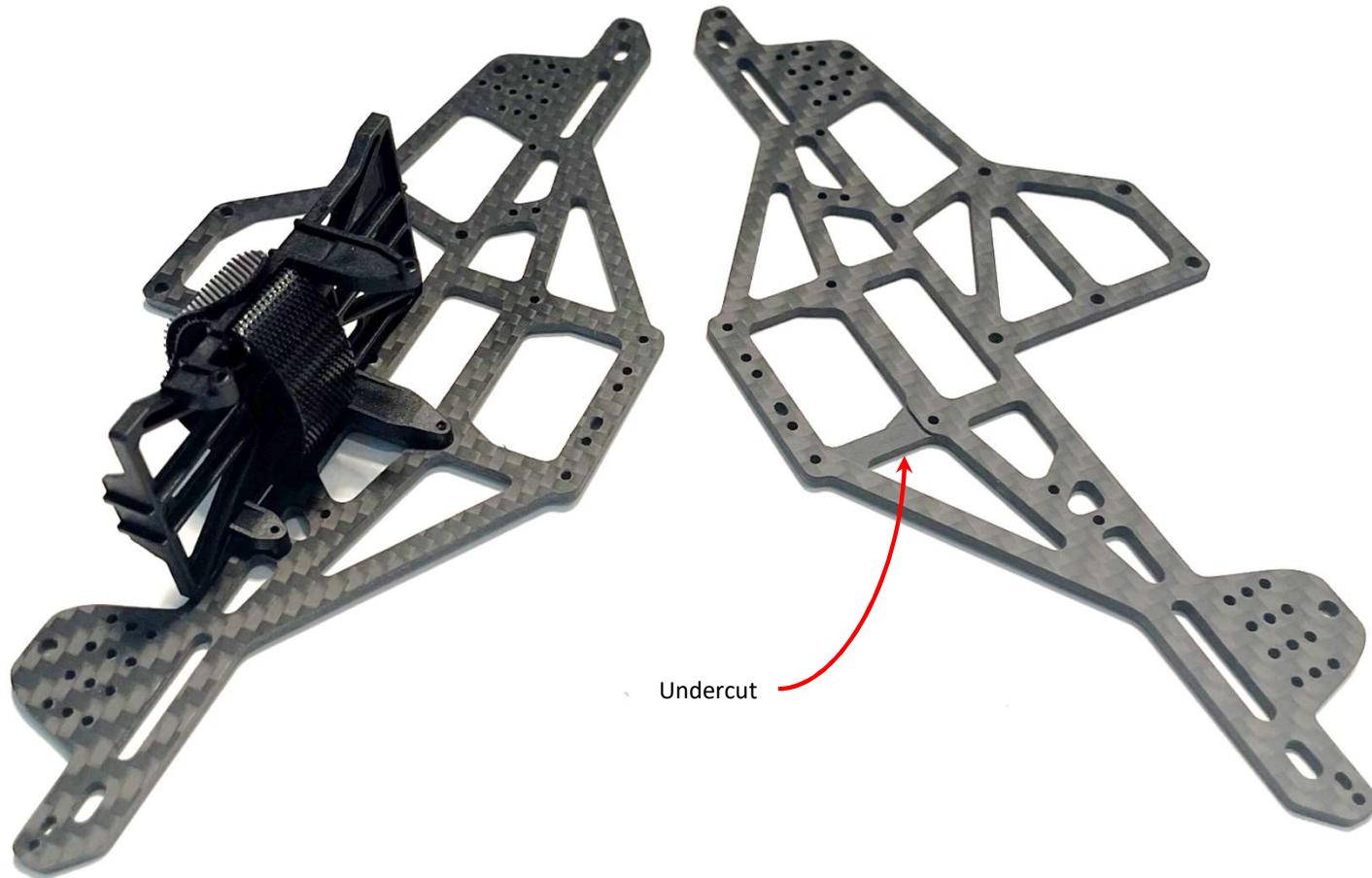
Step 2: Donor Chassis Parts

- Reference Page 3 for donor part options.
- Remove ESC Tray, Battery Tray, and Transmission Tray.
- Retain hardware for installation onto the side plates.



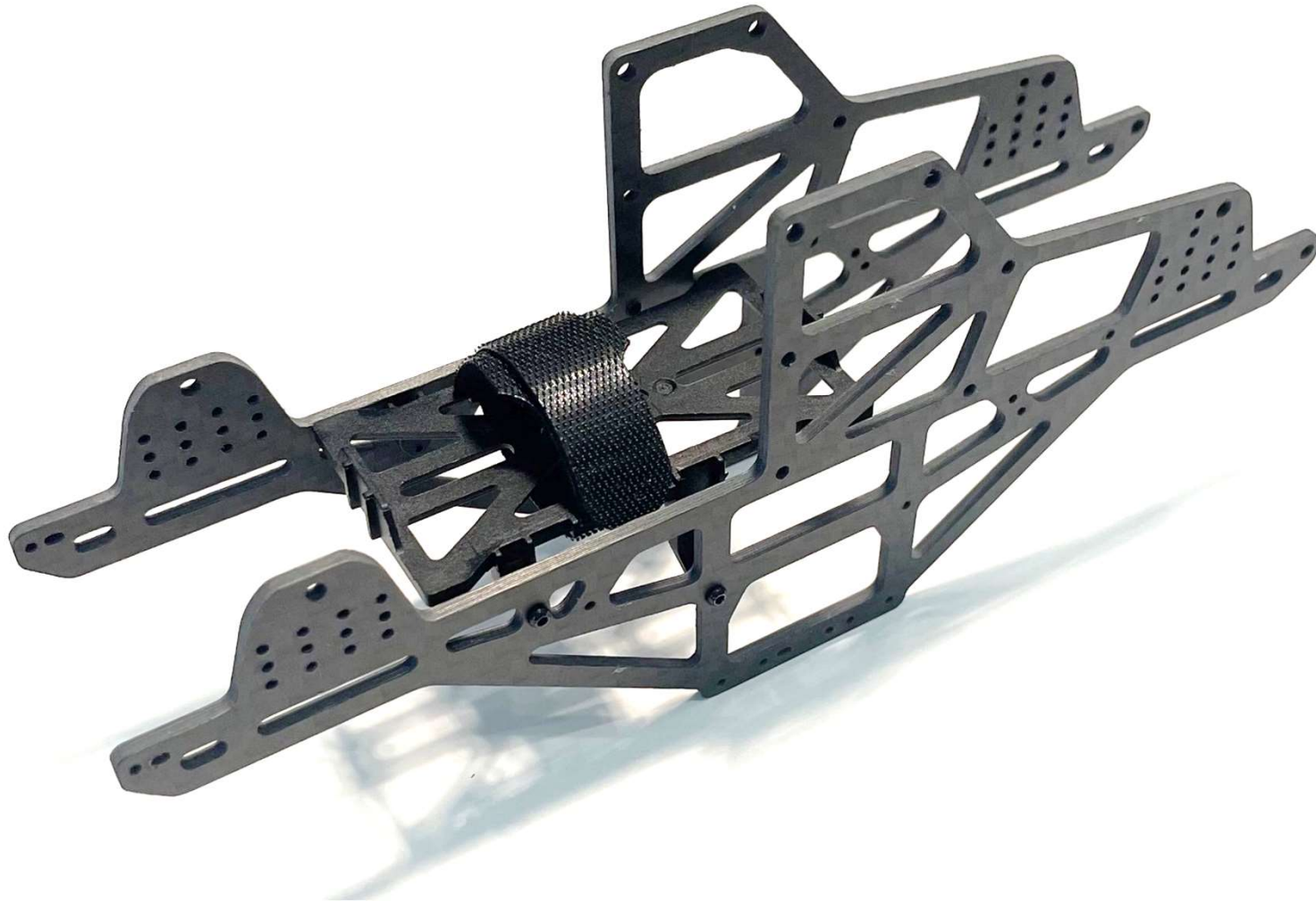
Step 3: Battery Tray Installation

- Install battery tray as shown in the picture using the stock hardware from previous step.
- Take note that the side plates are not identical.
- Right side plate contains an undercut section for motor clearance.



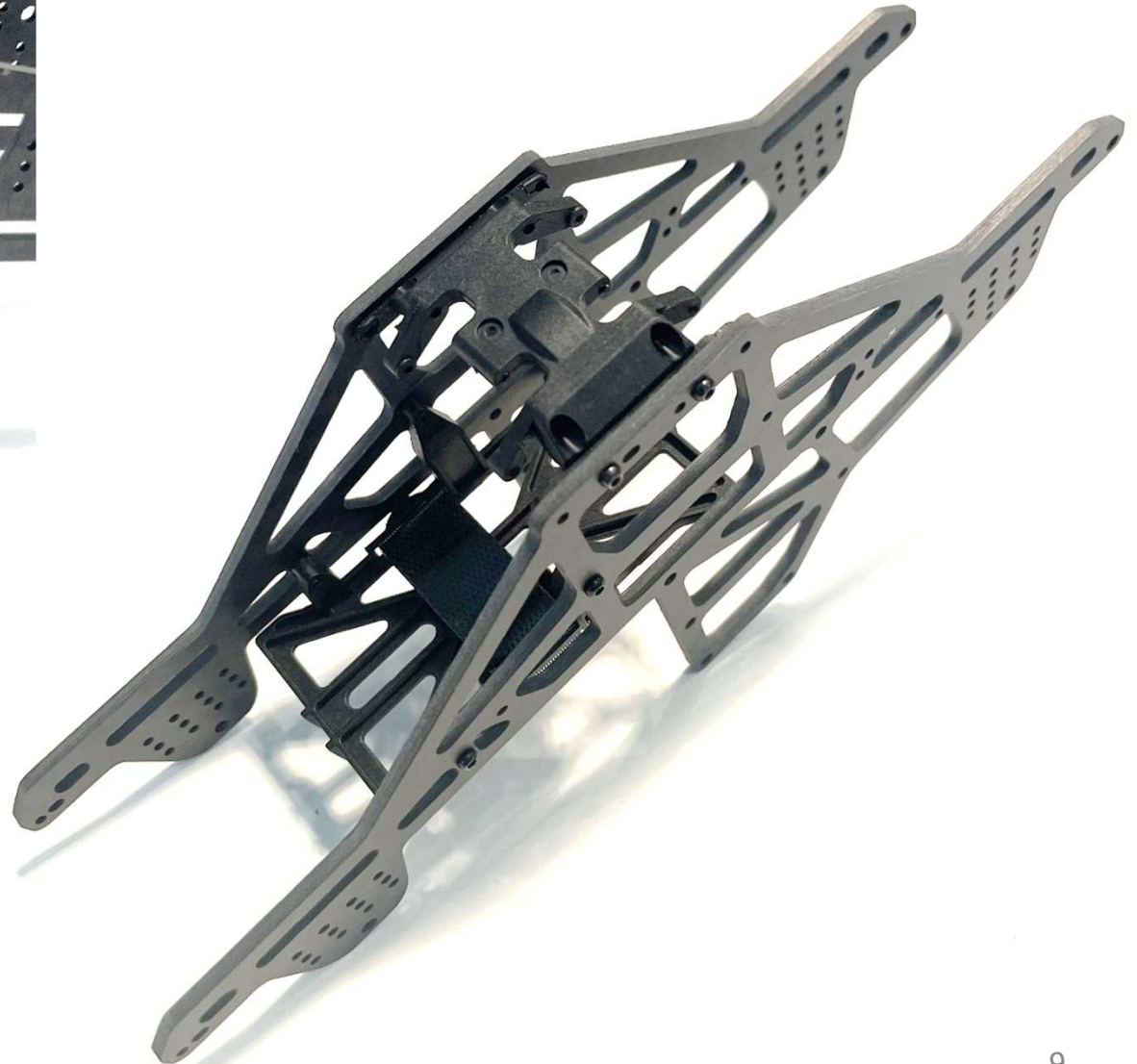
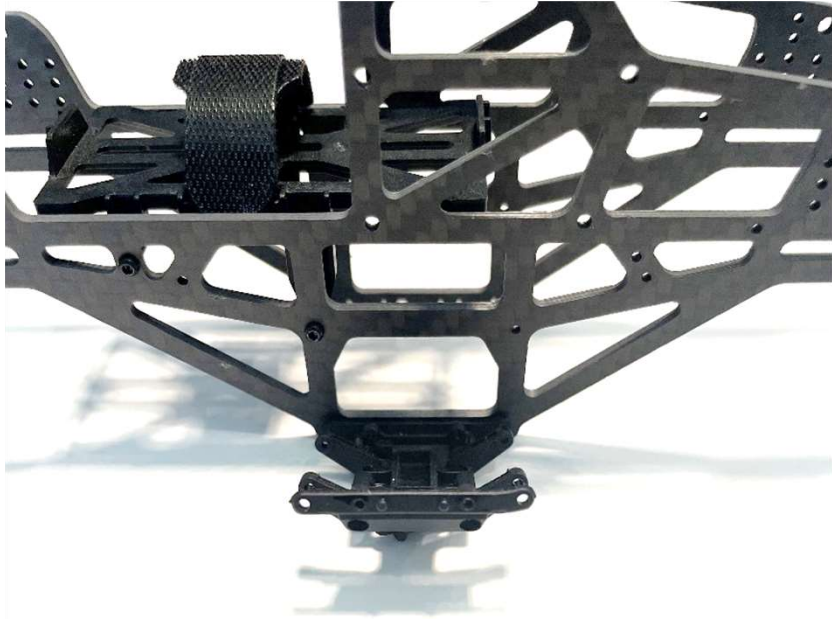
Step 4: Battery Tray Installation

- Bolt up right side plate as shown.
- Double check that side plates are on the correct side.
- The right side plate should have the undercut section facing inward.



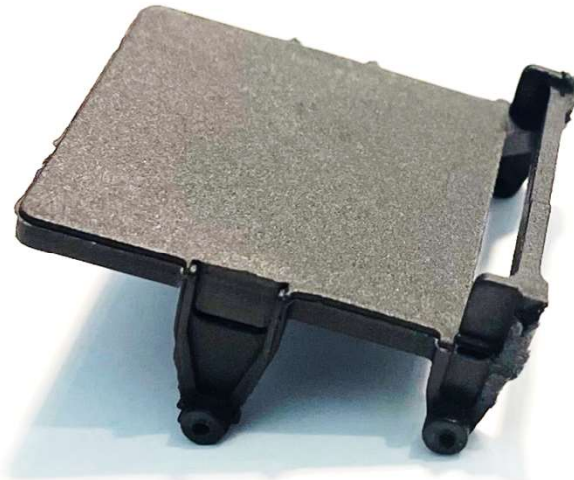
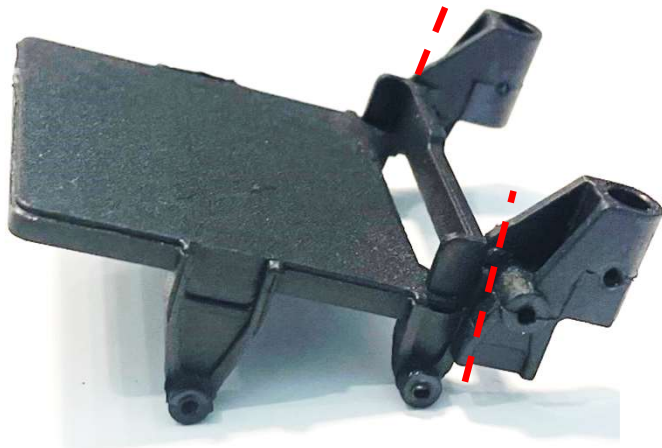
Step 5: Transmission Tray Installation

- Orientation is critical. Install transmission tray as shown below.
- Use stock hardware retained from step 2.



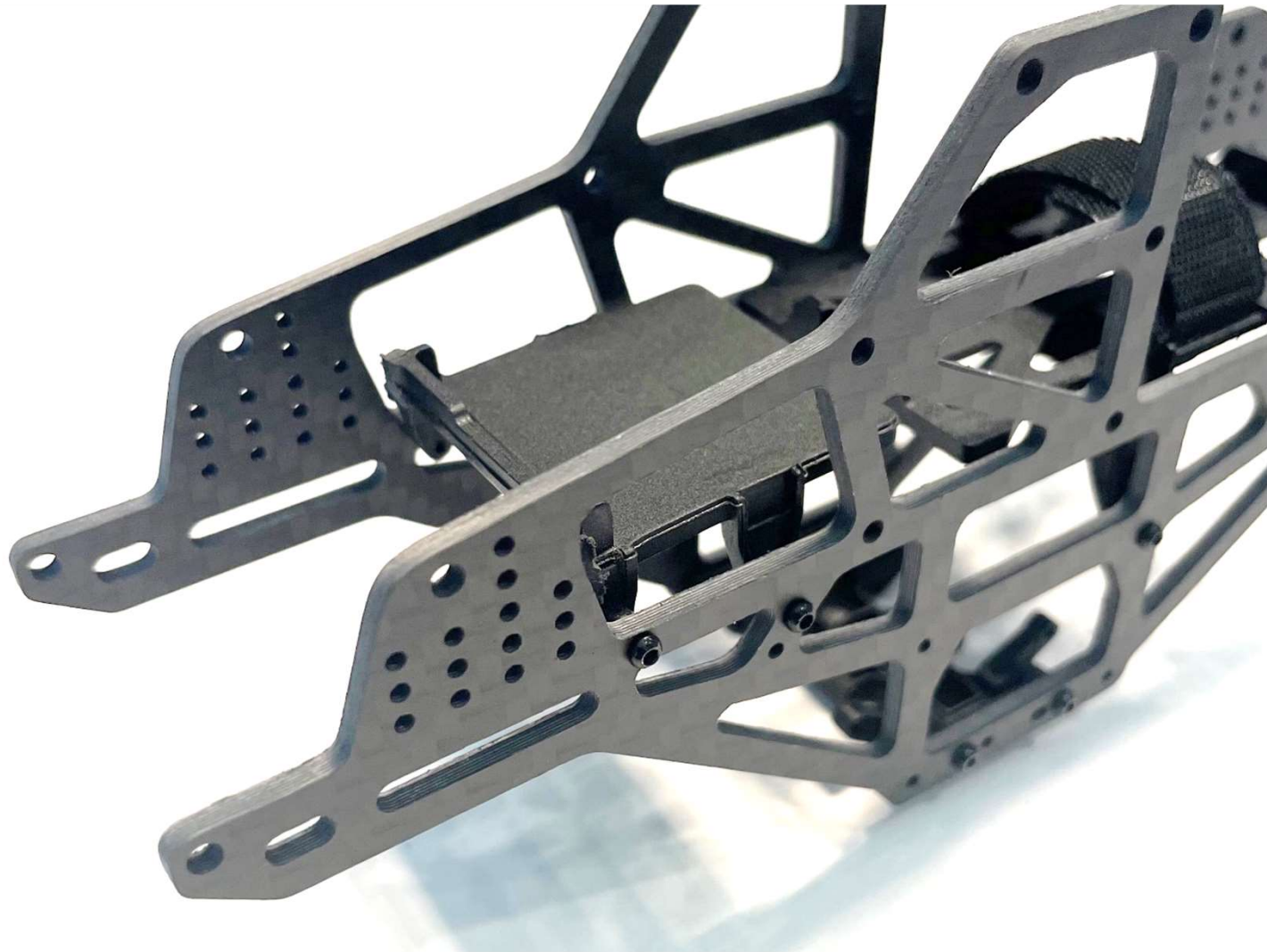
Step 6: ESC Tray Preparation

- Tray shown below is from AXI31614.
- Keep in mind, your tray may look different based on donor option.
- Remove material as shown. Goal is to maintain the tray's platform and four (4) mounting posts.



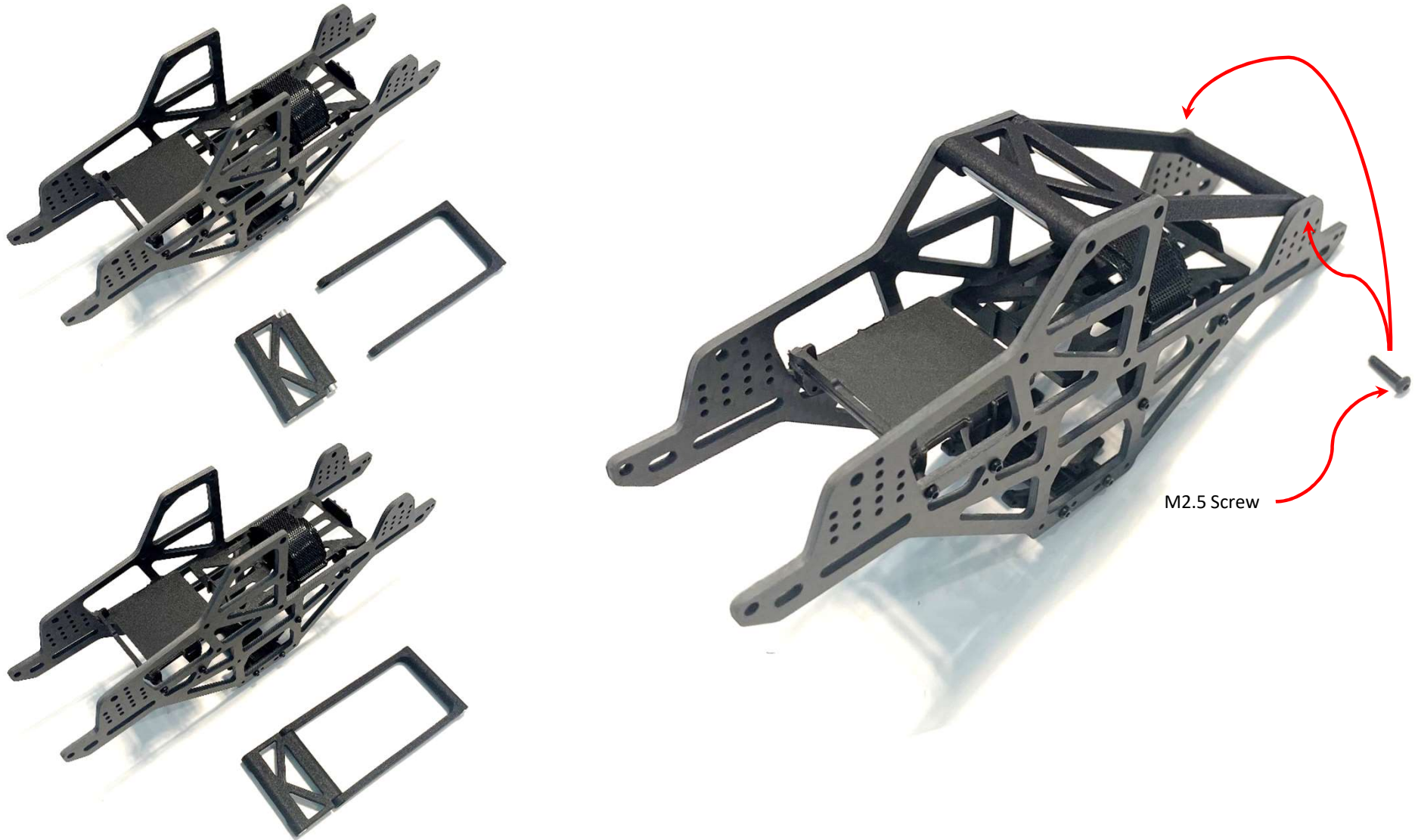
Step 7: ESC Tray Installation

- Install ESC tray as shown below.
- Use stock hardware retained from step 2.



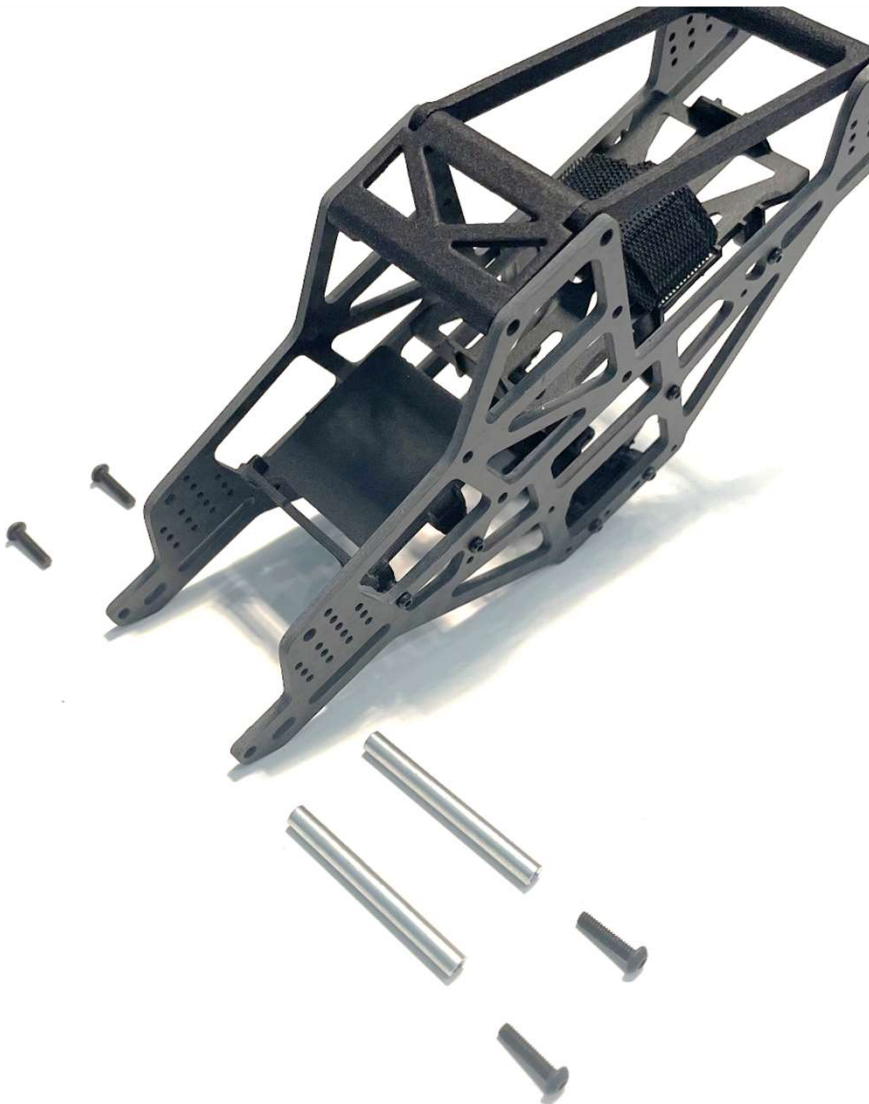
Step 7: Cage Top and Roll Bar Installation

- Connect the roll bar and cage top together as shown.
- Install into chassis, and only install the hardware at the rear section of the roll bar at this time.



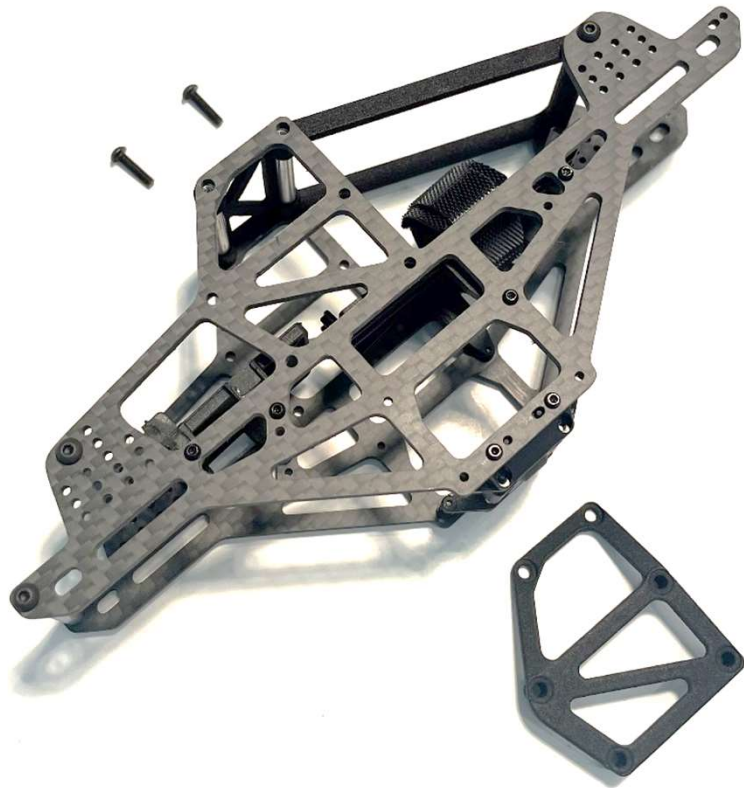
Step 7: Front Crossmember Installation

- Install the front crossmembers as shown below.
- Utilize the M2.5 hardware provided.



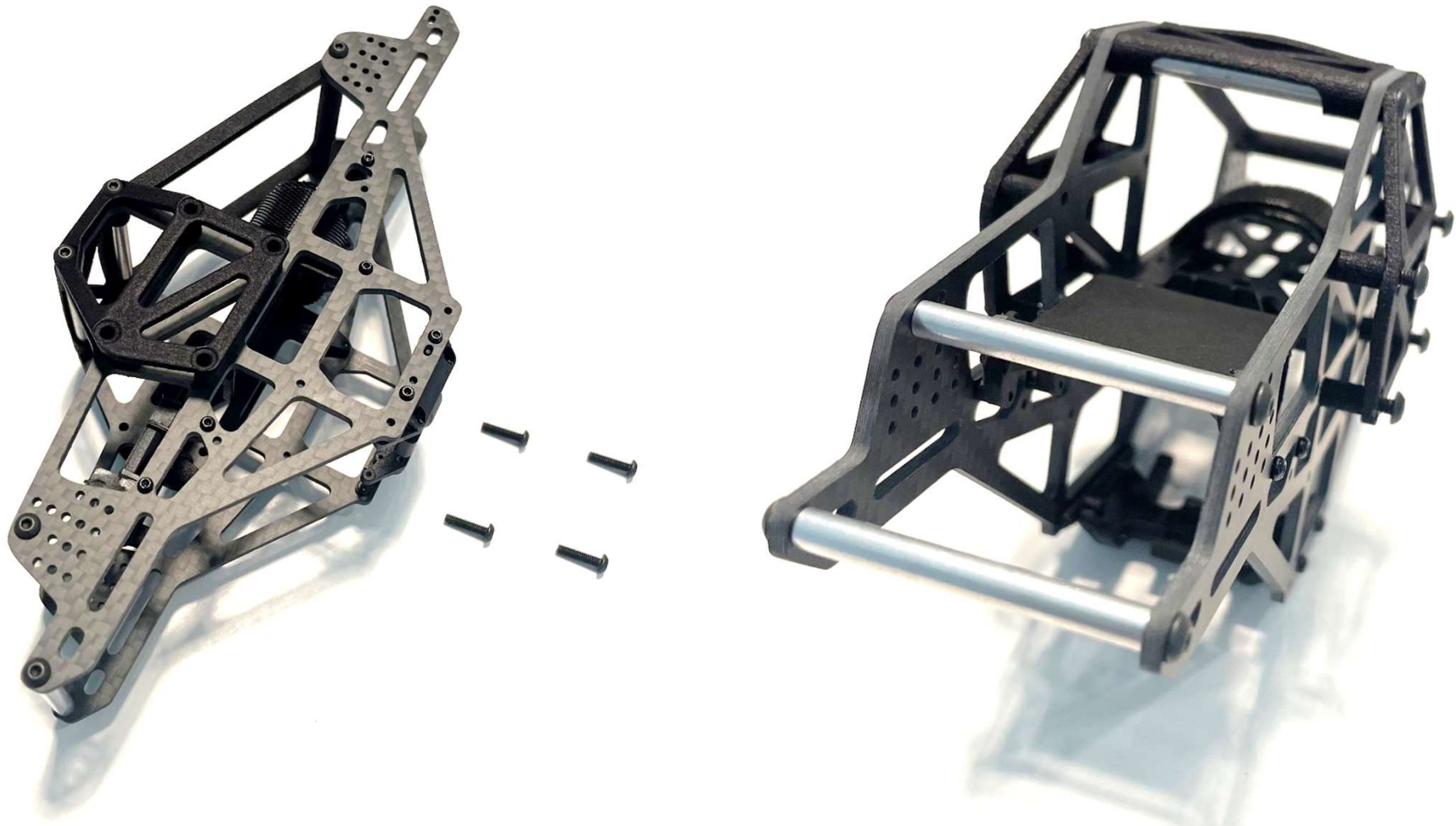
Step 8: Cage Sides Installation

- Install the left and right side of the cage.
- Connect only the top fasteners as shown below.
- Utilize the M2.5 hardware provided.
- Do not overtighten. Only snug fit. Overtightening may cause top cage to bow.



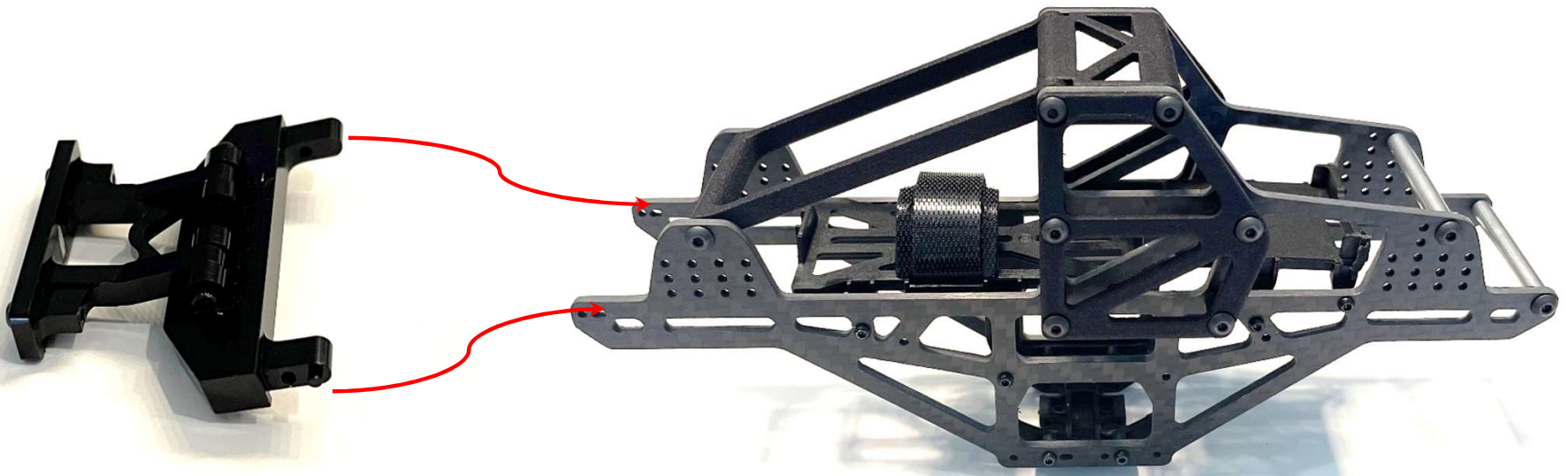
Step 9: Cage Sides Installation

- Install four (4) M2.5 screw into one cage side.
- Tighten hardware down slowly by hand using appropriate wrench.
- The hardware will thread into the carbon fiber side plate.
- Do not overtighten. Tighten down until the cage side post is snug.
- Perform for both cage sides.



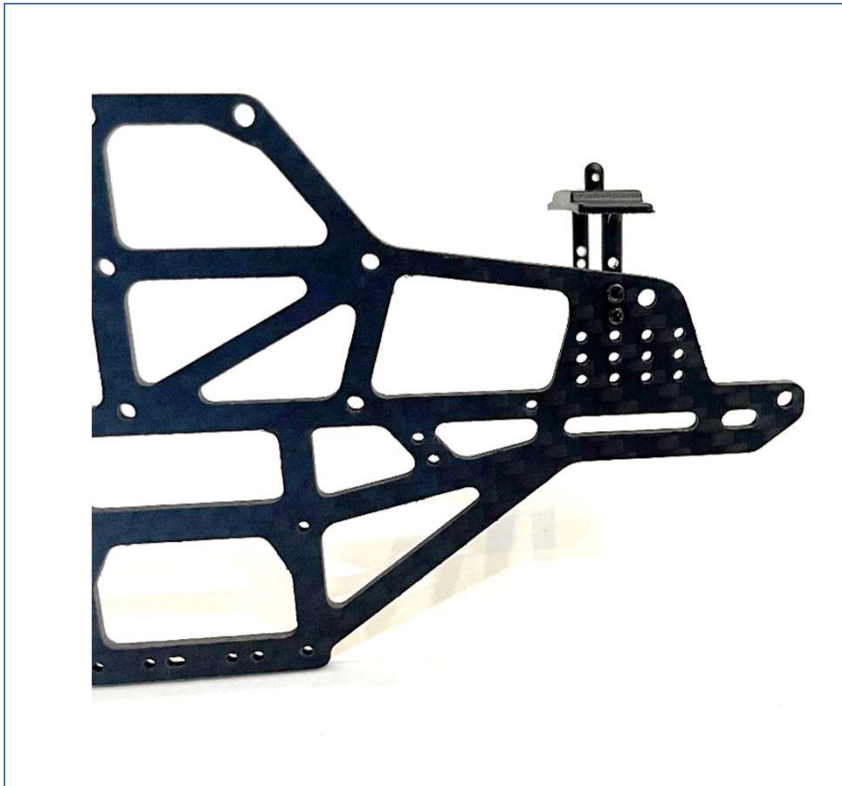
Step 10: Rear Body Mount

- Utilize rear body mount shown below.
- This part can be the stock rear body mount from the Deadbolt or can be aftermarket.
- Utilize the hardware from the Deadbolt or from the aftermarket mount.



Step 11: Front Body Mount

- Utilize the body mount(s) from your donor option.
- Mount as shown below or orient in direction that best fits body.
- The step requires patience!
 - Can be difficult to thread into body post. You got this!



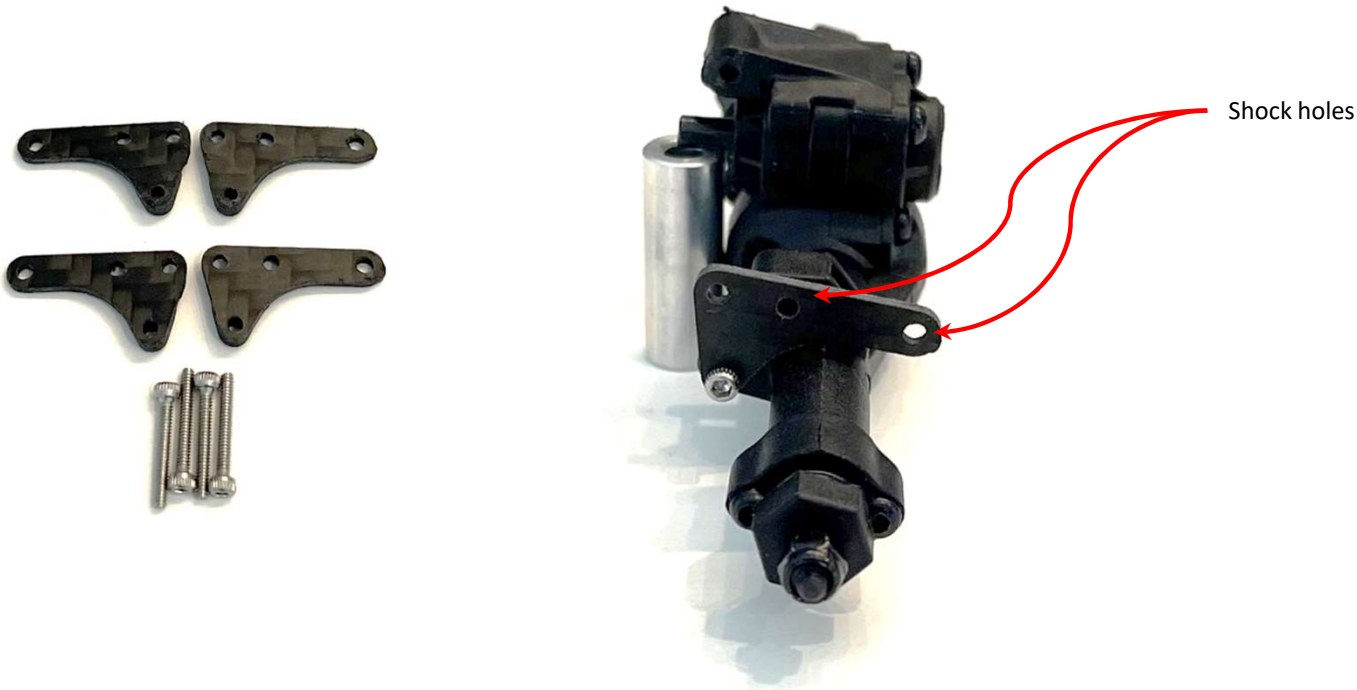
SCX24 Jeep Front Body Mount



Deadbolt Front Body Mount
C10 Similar

Step 12: Dual Shock Mounts

- Install two brackets per axle.
 - Please read note 1, page 3. Aftermarket axles may not work.
- Note that the brackets are handed and install in a particular orientation as shown below.
- Hardware provided is used at the 4-link hole.
- Dual shock usage is a user preference and not required.



Step 13: Final Button-up

- Install 4-links, axles, driveshafts, and shocks.
- Install electronics.
- Install SWMS wheels, and mount tires.

Step 14: Admiration

- Steps to follow when your chassis is complete.
 1. Take a few steps back and admire your work.
 2. Take pictures and post to social media.
 3. Lastly, have fun!

TIPS & TRICKS

- Buy a set of M1.4 hardware, they are easy to lose
- Buy M1.4 nuts (eyeglass nuts work in a pinch)
- This kit is super tiny, have patience
- No need to glue tires!!!! (SWMS wheels eliminate need)
- Use stock plastic hexes, aftermarket can be undersized
- Shock options, but not limited to:
 - Stock w/double barrel conversion
 - HR extended travel
 - HR double barrel
- Electronics are ***user preference***, but SWMS uses:
 - Surpass 1220 motor, fits stock transmission best – 8300, 8700 series have decent speed
- Use overdrive worm gears to gain speed
- Stock SCX24 bearings are okay; they will blow up in time
- Swap battery connectors for XT30s
- Remember these are not 1/10 scale vehicles

